



2015+ Dodge Challenger/Hellcat - Blip Module

Please be sure to completely read this instruction sheet before beginning installation.
Direct any questions to support@xineering.com

After installation, first be sure the accelerator pedal operates normally with the car running. This can be done by simply starting the car, OR using a diagnostic tool to monitor throttle position with the ignition ON and engine OFF

What's Included:

1. 20 Pin main harness - 12V Power/GND/Brake/Clutch
2. Inline pedal harness (OEM Specific Male-Female Pedal Harness)
3. USB cable for connecting to PC Program and/or Android APP

Connect the **ORANGE** wire to ACC 12V power, powered at ignition ON and RUN.

Connect the **BLACK** wire to system ground.

Connect the **YELLOW** wire to Clutch Trigger Output - Active LOW

Connect the **BROWN** wire to Brake Light circuit - Active HIGH (Any >2.5V)

The brown brake input wire can be connected to the 12V High brake light circuit or any other signal that goes above 2.5V when the brake pedal is pressed.

A system activation/disable switch is recommended on the ORANGE wire to disable automated blipping when in the pits or normal driving.

Throttle BLIPS when Clutch voltage is active AND Brake Voltage is HIGH.

Pin#	Color	Signal
1	BLK	GND System
11	ORG	+12V PWR
3	BRN	Brake 0->12V
4	YEL	Clutch 12V->0 or 0->12V



20 Pin Main harness

6 Pin Pedal

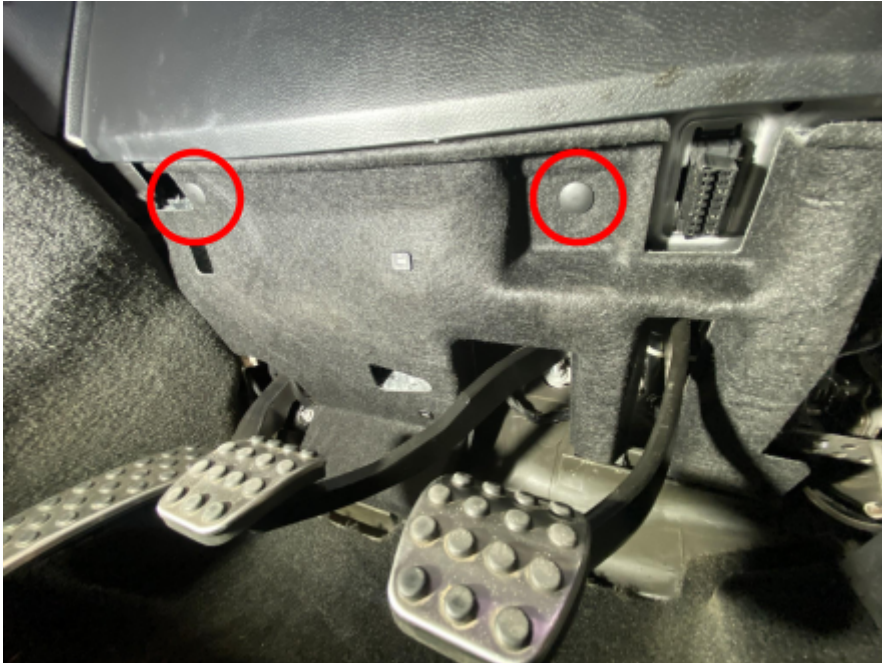
2015+ Challenger/Hellcat Supplemental Guide

Be advised, you will have to remove interior trim panels to reach all connections.

Interior Panel Removals

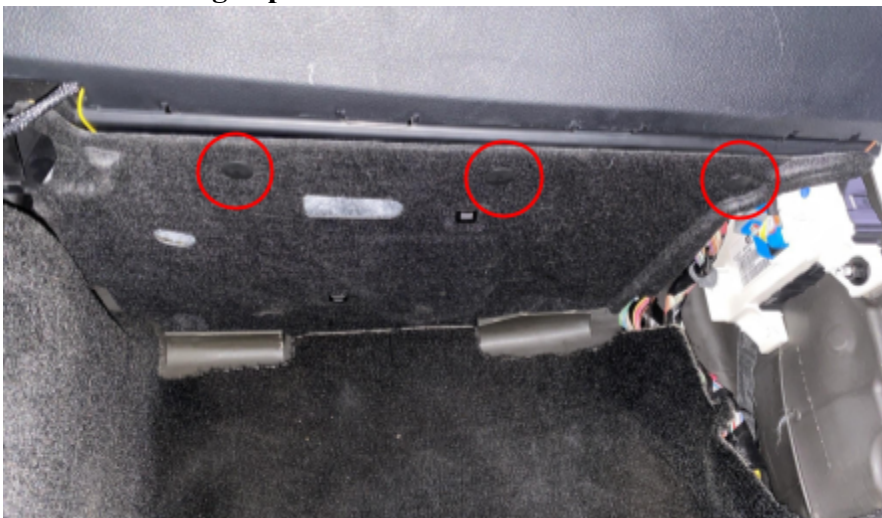
Remove Driver Footwell Cover:

Pull on retaining clips to release. Disconnect 4 Pin connector.



Remove Passenger Footwell Cover:

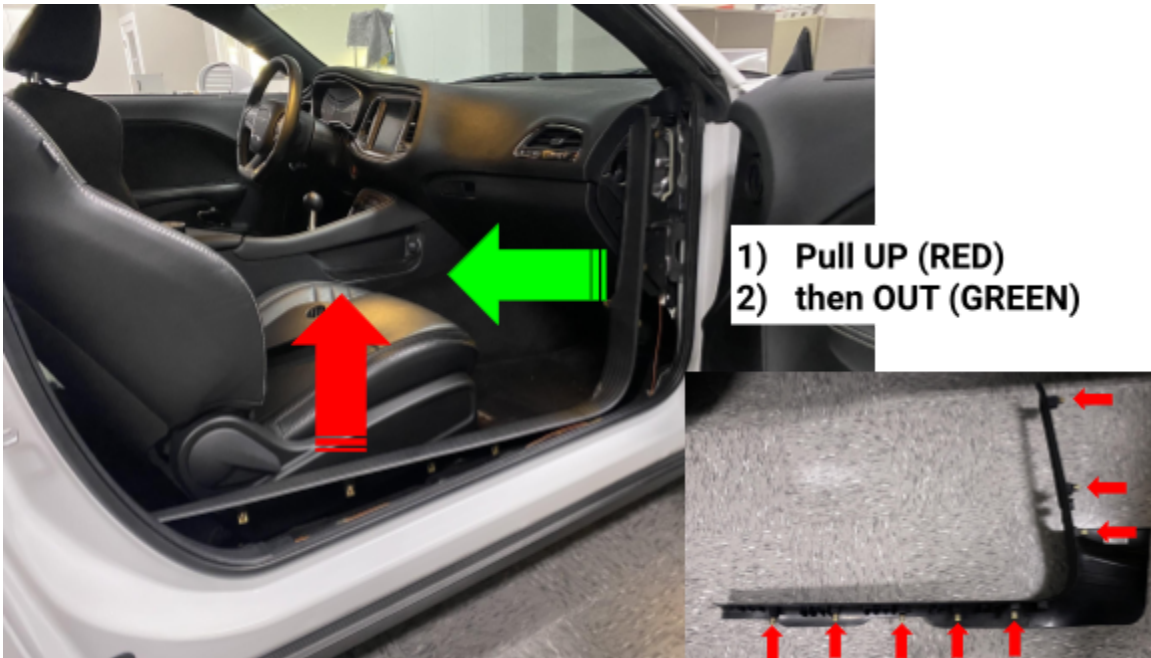
Pull on retaining clips to release. Disconnect 4 Pin connector.



Remove Passenger A/C Vent Trim:
Pull on the trim cover to release.



Remove Passenger Interior Cabin Trim and Kick Panel:
Pull on the trim cover to release.



Remove Trunk Liner:

Lay down the rear seats. Remove velcro attachment. Pull Trunk Liner Tab up and remove.



Completely Removed

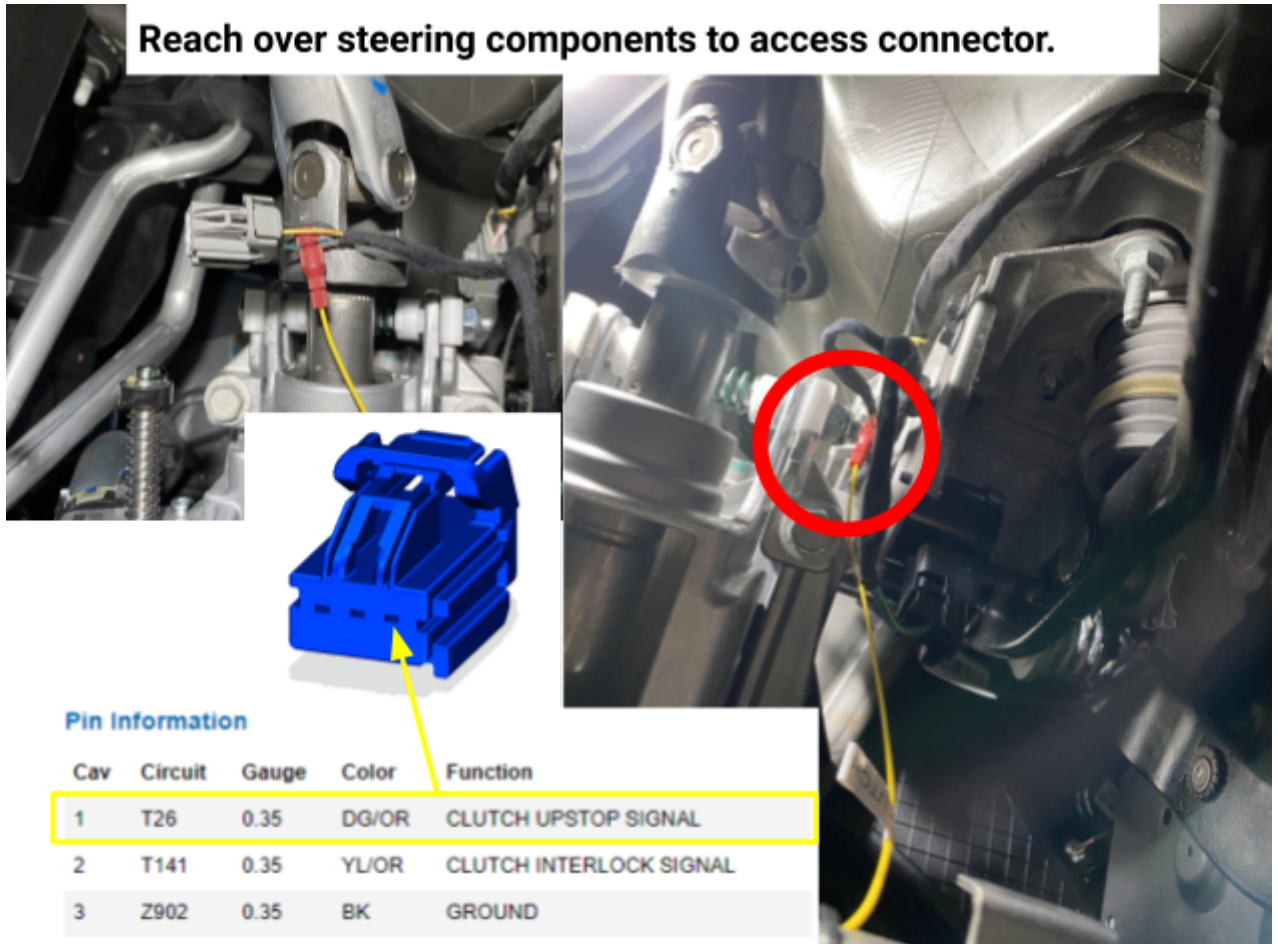
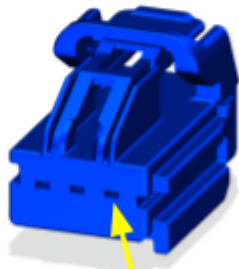


Clutch

Clutch Interlock Switch - 3 Pin Switch:

Disconnect and TAP Pin 1 - Dark Green/Orange (Active HIGH)

Reach over steering components to access connector.

Pin Information

Cav	Circuit	Gauge	Color	Function
1	T26	0.35	DG/OR	CLUTCH UPSTOP SIGNAL
2	T141	0.35	YL/OR	CLUTCH INTERLOCK SIGNAL
3	Z902	0.35	BK	GROUND

Brake

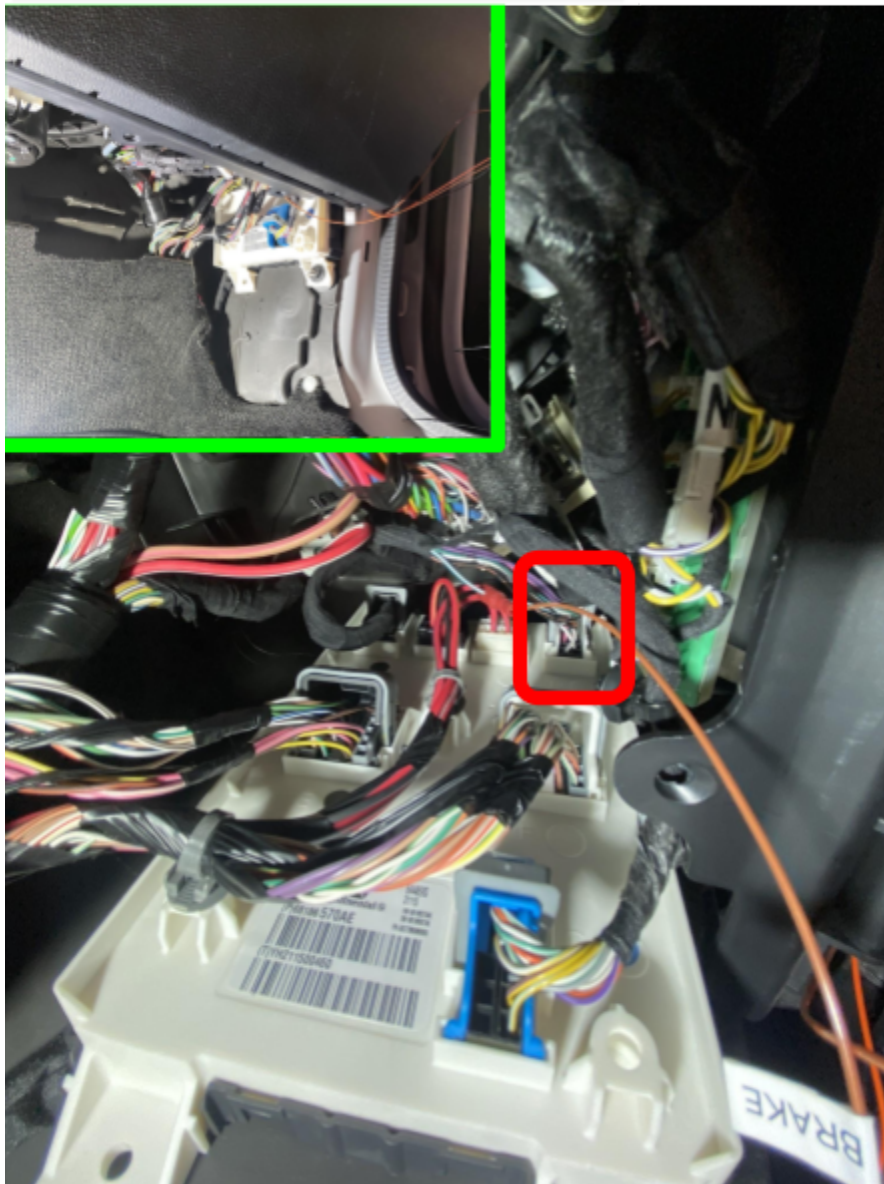
DO NOT DISCONNECT THE BCM CONNECTOR

BCM Connector C4/D - 24 Pin Connector:

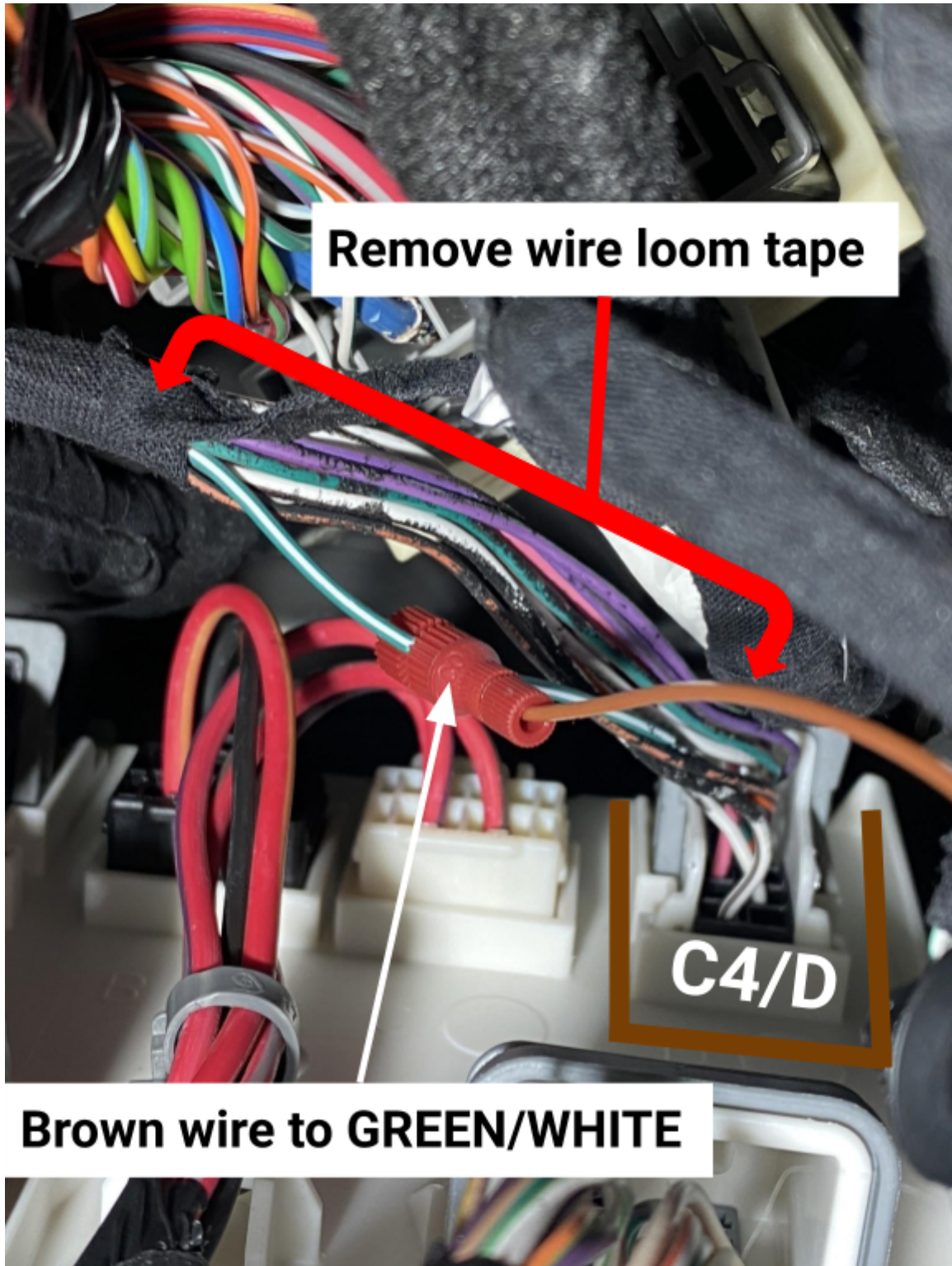
Remove wire loom tape (about 5in.)

TAP Pin 18 - Dark Green/White (Active HIGH)

16	N0	0	NA	NO CONNECT
17	D403	0.35	OR/DB	LIN BUS CBC 3
18	B15	0.50	DG/WT	BRAKE SIGNAL 1
19	Z420	0.50	BK/OR	GROUND



Brake Cntd.



12V Power

DISCONNECT BATTERY BEFORE PROCEEDING

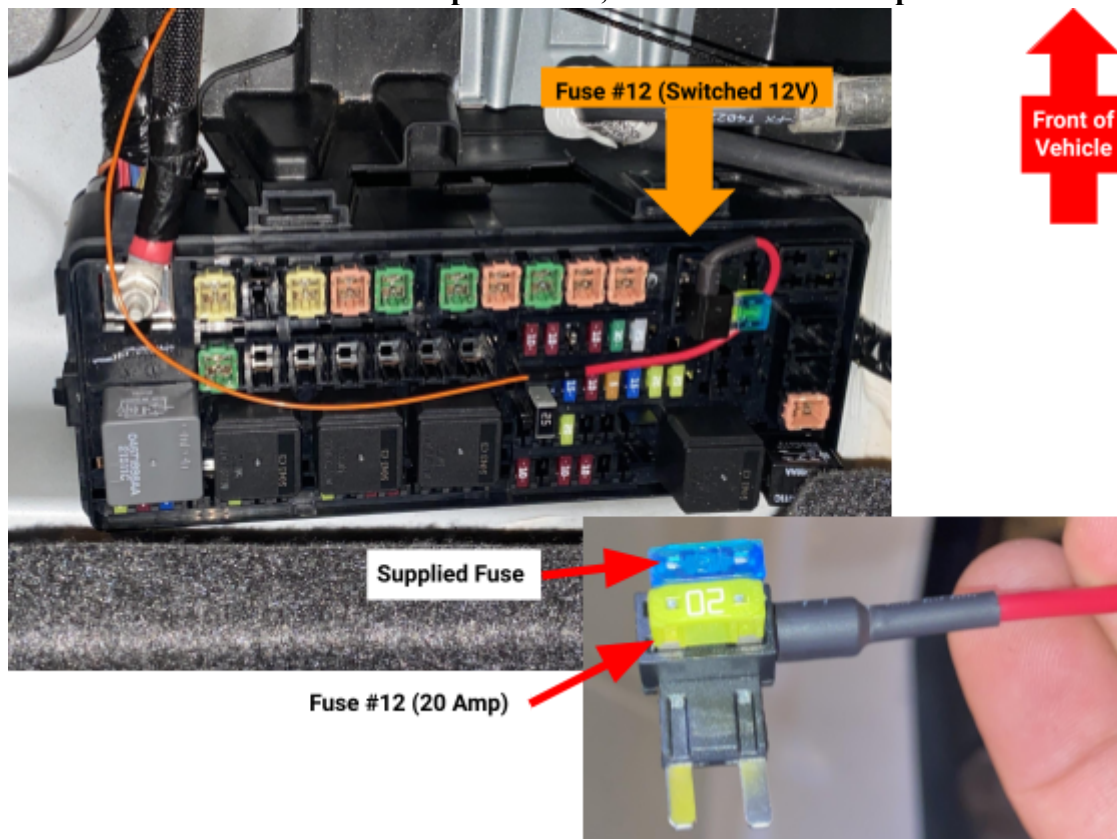
Run the 15' 12V power wire with Fuse Tap along the end of the vehicle to the rear fuse box. Tuck the wire along the side of the vehicle keeping it out of any clip slots to not damage the wire when reassembling the trim panels.



Rear Fuse Box:

Remove the 20Amp Fuse from the #12 fuse spot.

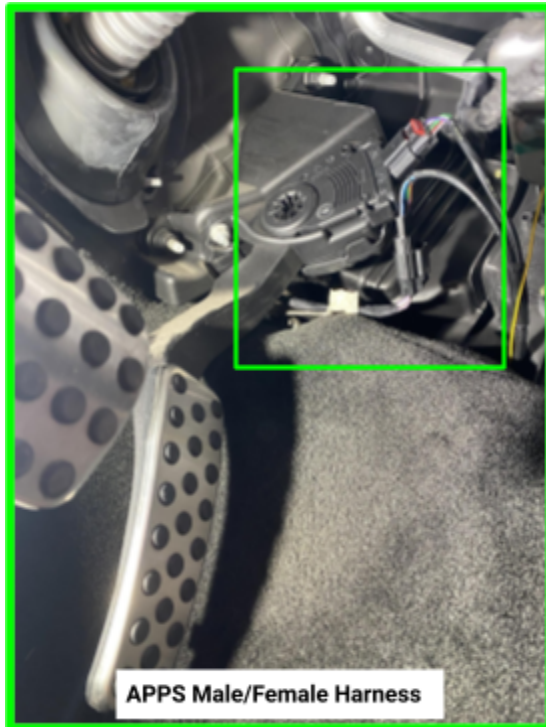
Place OEM fuse into the Fuse Tap as shown, insert into #12 fuse spot.



APPS & Ground

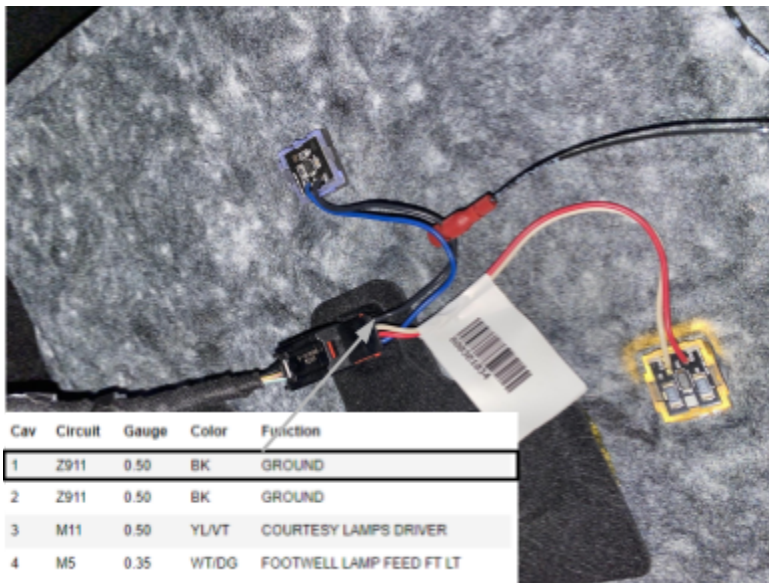
Accelerator Pedal Position Sensor (APPS) - 6 Pin Sensor:

Install PNP APPS Harness Male/Female, feed other end behind dash to glove box.

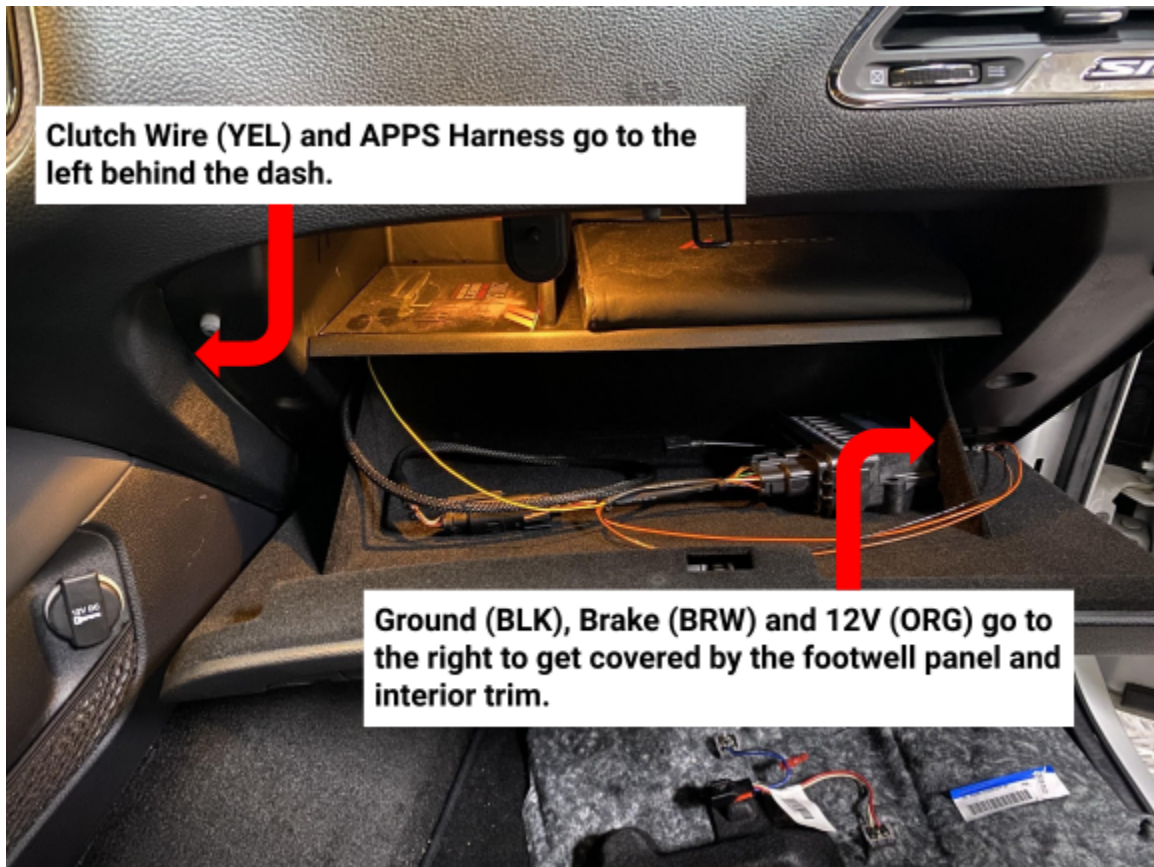


Passenger Footwell Light - 4 Pin Connector:

TAP Pin 1 - Black



Module Location - Glove Box

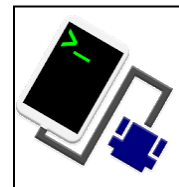




Android App Instructions

Install 'Serial USB Console' App from the Google Play store on to an android phone OR tablet.

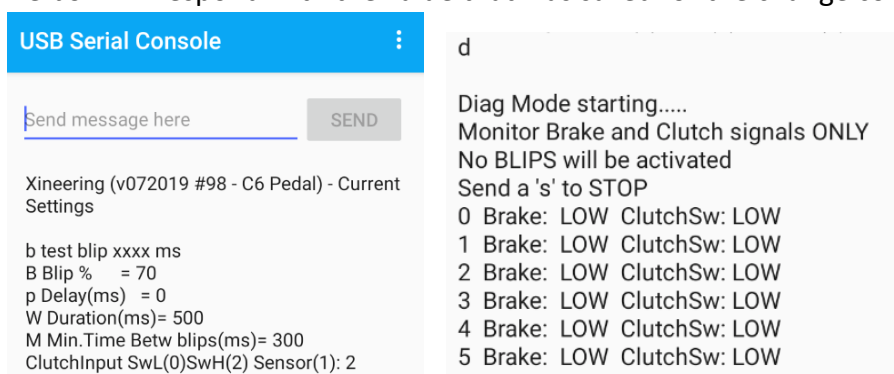
It already has all the drivers needed to 'talk' with our blip module via USB and USB OTG cable (supplied) to an Android device.



Upon start up, Select OK twice to allow connection to our blip module.

It will automatically set up any connection settings.

The first serial command will display the current settings and serial number of the blip module. To change any of those settings enter the change Command followed by a number. The box will respond with the value that was saved for the change command.



Name	Command	Range
Read Settings	R	Output settings
Blip	B	0-100% (5% Increments)
Delay	p	0-1000 (ms)
Duration	W	0-1000 (ms)
MinTime	M	0-1000 (ms)
Clutch Set	T	0-100%

Example: (CASE SENSITIVE)

R then click SEND, box responds with the settings

B 100 then click SEND, box responds with 100 = sets Blip 100%

p 250 then click SEND, box responds with 250 = sets pre-blip delay 250 ms

W 1000 then click SEND, box responds with 1000 = sets blip duration to 1000 ms

M 300 then click SEND, box responds with 300 = sets min. time between blips to 300 ms

d Start Diagnostic Mode

s to STOP Diag Mode

Test blip via USB, send 'b' and a duration (50-1000ms):

Example: b 250 will blip the throttle to the set % for 250ms

Diagnostic mode, send 'd' and a data log will start showing the status of the brake and clutch signals and if a BLIP has been registered. No blips will occur in this mode.

Send 's' to stop diagnostic mode.



Windows PC program Instructions

Step 1: Download and extract the Blip Control zip file from Xineering.

<https://www.xineering.com/downloads.html>

Scroll to the Software section: Download **BlipControl Software** zip file

Be sure to download it somewhere you will remember, like desktop or downloads folder. The extracted folder will have a resources folder and BlipControl_V#.exe.

The program can be run directly from the extracted folder.

Step 2: Connect the USB cable to your PC and Blip Module

Step 3: Open the BlipControl_V#.exe and select the COM port # the blip module is connected. If there is only one shown, select that one.

The settings will be automatically read out when a connection is made.

For more help click the -INFO v1.0- button in the About Tab

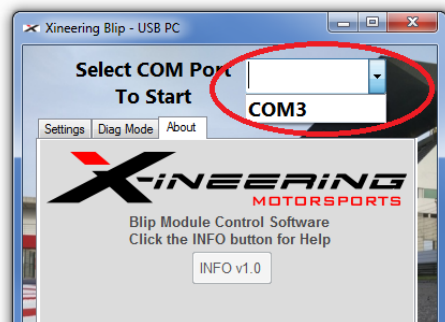
NOTE:

If no new COM Port shows up in Device Manager then you need to install the device drivers (See Device Manager pic below)

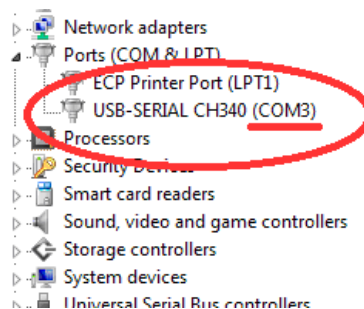
Download the USB Serial Drivers from our website, run the setup.exe.

<https://www.xineering.com/downloads/CH340Driver.zip>

It is recommended to always connect the blip module USB to the same port of your computer to retain the same serial COM #.



BlipControl_Vx.exe



Device Manager (Ports)